

LESSON
1-1

Domain, Range, and End Behavior

Practice and Problem Solving: Modified

Describe the given number line or inequality using the notation indicated. The first one is done for you.



Set Notation: $\{x \mid x \leq 4\}$



Inequality: _____

3. $x \geq 7$

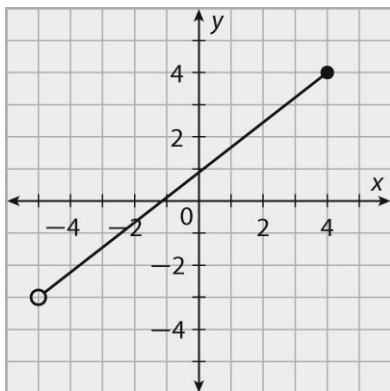
Interval Notation: _____

4. $16 \leq x < 54$

Set Notation: _____

Use set notation to describe the domain and range of each graph. The first one is done for you.

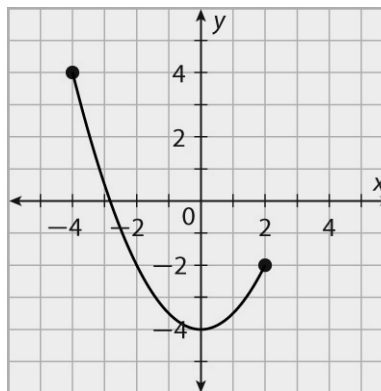
5.



Domain: _____

Range: _____

6.



Domain: _____

Range: _____